



Home & Land Packages

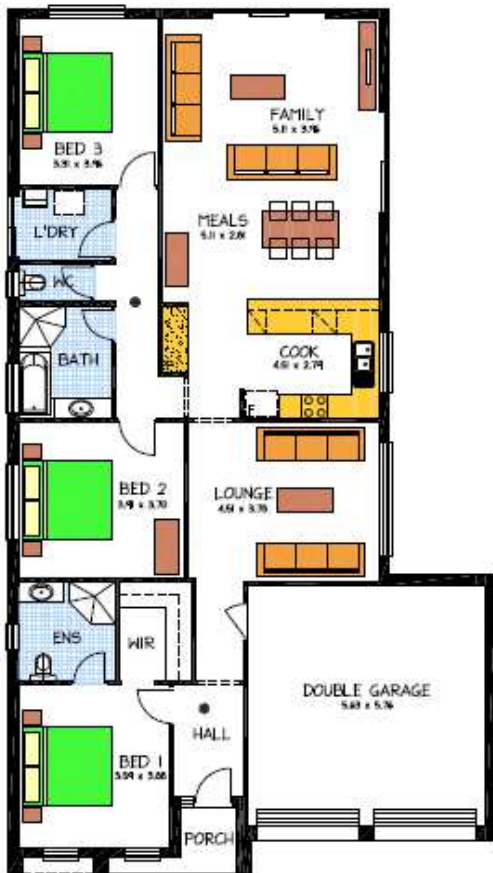


THE LYNTON

LOT13 WASHINGTON STREET, GOOLWA

This package includes:

- Select Specification
- Including cost to build in Goolwa
- Common Effluent & Connection to STEDS Included
- Dbl Garage
- Joinery
- Built In Robes
- Appliances
- Wet Area Tiling
- Porch



PACKAGE FROM: **\$324,700**

HOME: **\$152,700** LAND: **\$173,000**

Disclaimer: All care has been taken in the preparation of this material. No responsibility is taken for any errors or omissions. Details are subject to change without notification. Images for illustration purposes only. E&EO.

FOR THIS OFFER CALL
LEON: 0402 47 1977

P: 08 8433 2000 www.rossdalehomes.com.au

 *Because trust is a must.*
**ROSSDALE
HOMES**